



A Touchstone Energy® Cooperative 

LACREEK ELECTRIC
MAY 2022 VOL. 23 NO. 1

COOPERATIVE CONNECTIONS



Great Goats
Goats gaining in popularity
Pages 8-9
Irrigators benefit from load control
Pages 12-13

Bennett and Matea Gordon of Whitewood are part of a rising trend in teens choosing to show goats at youth exhibits and competitions

Lacreek Electric Association's 2021 Annual Report



Josh Fanning
General Manager



Clarence Allen
Board President

Find Your Account Number:
It's Worth \$110!

A member's account number has been hidden somewhere in this newsletter. If you find your account number, call the office before **May 12, 2022**, and you will receive a \$110 credit on your next month's billing.

We would like to welcome our members to the 74th Lacreek Electric annual meeting. As always, our goal at Lacreek Electric Association Inc. is to serve our members as best we can in today's environmental/technology driven world, and to be able to provide our members with safe, affordable and reliable energy.

We feel strongly that our responsibility to the membership is to continually improve our community's energy infrastructure and implement new technologies as we strive to maximize the efficiency of our operation.

Through the planning and foresight of your board of directors and management, a tremendous amount of hard work from your employees and the support of the members, Lacreek showed operating margins of \$153,634, non-operating margins of \$782,418 and G&T margins of \$285,851. In 2021, we retired \$994,333 in cooperative capital credits, and \$99,991 in estates. In addition, the members received an earned credit on their electric bills totaling \$597,884.

At the beginning of this month, we retired \$1,129,322 in capital credits for the years 1998, 1999 and 2000.

THE 2021 CONSTRUCTION SEASON

Lacreek Electric's 2021 work season marked the final year of the 2018-2021 Four-Year Construction Work Plan. The addition of Amendments to the plan made for an abundance of underground projects in the Nebraska service area and along Highway 18 from Martin to Batesland.

In the Lacreek service area in Nebraska, along Boiling Springs Road and South Eli Road, we replaced eight and one half miles of mainline underground cable, along with

adding two sets of Pad Mount Regulators to assist with capacity.

A Nine-mile underground tie line from the intersection of Allen Road and along Highway 18 to Batesland was developed with two motives; the first being the ability to conduct work in either area without outages and the second was to get state assistance to fund the moving of power lines affected by upcoming road construction in that area.

Other Tie line projects completed in 2021 were an overhead Three Phase tie line across the Gooseneck Road that connects the Porcupine and Manderson communities. This was a much-needed project to increase reliability in the Manderson area and was partially funded by AT&T adding a cell tower halfway along this highway.

Other big projects were upgrades to several Substations. The Shannon Sub was outfitted with new sub-transmission Vacuum Breakers replacing the old Oil Circuit Breakers and new battery backup equipment.

The Kyle Substation upgrade has been an ongoing process that started with 73 miles of the outlying areas being reinsulated to accommodate the step-up in voltage. This was worked on over the course of the work plan and was completed last year. The work upgrading the substation consisted of reinsulating for the higher voltage, adding modern electronic breakers and installing SCADA equipment for remote monitoring of the Sub.

In a nutshell, this reflects the highlights of our construction season with many other lines built for residences, new schools and businesses.

In conclusion, we would like to thank Lacreek employees, Rushmore Engineering, and the Lacreek Board for their diligence and hard work and the Membership for their patience and support.

Contributors: Mike Pisha, Operations Manager, and Anna Haynes, Finance Manager.

**COOPERATIVE
CONNECTIONS**

LACREEK ELECTRIC

(USPS No. 018-912)

Board of Directors

- Clarence Allen – President
- Wade Risse – Vice President
- Brent Ireland – Secretary
- Troy Kuxhaus – Treasurer
- Cole Lange – Clifford Lafferty
- Scott Larson – Neal Livermont
- Tom Schlack – Marion Schultz
- Jerry Sharp – Connie Whirlwind Horse
- Donovan Young Man

Management Staff

- Josh Fanning – General Manager
- Sherry Bakley – Work Order/Staff Assistant
- Tracie Hahn – Office Manager
- Anna Haynes – Finance Manager
- Mike Pisha – Operations Manager
- Ashley Turgeon – Administrative Assistant
- Jessica Cook – Member Services/IT

Office Personnel

- Amy Pisha – Right of Way Specialist
- Kasi Harris – Accountant II
- Terri Gregg – Member Service/
Billing Specialist
- Katrina Fish – Member Service/
Billing Specialist
- Lisa Jensen – Member Service Representative
- Operations Personnel**
- Line Foreman: Jesse Byerley
- Journeyman Linemen:
Jordon Bakley – Dane Claussen – Lonny
Lesmeister – Garrett Metzinger
– Ryan Pettit – Aaron Risse – Damon Wangerin
- Apprentice Linemen:
Les Cuny – Kody Hagen – Matthew Kruid
– Trace Scott
- Journeyman Electrician: Roy Guptill
- Warehouse Man: Cody Larson
- Maintenance Man: Justin Smokov

This institution is an equal opportunity provider and employer.
This publication is mailed the 15th of the month prior to the issue date. Layout is at least three weeks prior to mailing. LACREEK ELECTRIC COOPERATIVE CONNECTIONS is published monthly by Lacreek Electric Association, Inc., PO Box 220, Martin, SD 57551 for its members. Families subscribe to Lacreek Electric Cooperative Connections as part of their electric cooperative membership. Subscription information: Electric cooperative members devote 50 cents from their monthly electric payments for a subscription. Nonmember subscriptions are available for \$12 annually. Periodicals Postage Paid at Martin, SD and at additional mailing offices. POSTMASTER: Send address changes to: Lacreek Electric Cooperative Connections, PO Box 220, Martin, SD 57551; telephone (605) 685-6581; fax (605) 685-6957

Reprint of
Official Notice

**of Lacreek Electric Association’s 74th Annual Meeting Thursday, April 21, 2022
Old American Legion Auditorium, Martin, S.D**

Dear Member,
Please plan to attend the 74th annual meeting of members of Lacreek Electric Association, Inc. on Thursday, April 21, 2022 at the old American Legion auditorium in Martin. Prizes will be given away, including one \$300 and eight \$50 grand prizes, and numerous door prizes. The annual meeting will include a meal served at the American Legion dining room

The afternoon’s events will include:

- 5:30-6:45 p.m. – Dinner served at the American Legion Dining Room
- 5:30-7:00 p.m. – Member Registration at Old American Legion Auditorium
- 7:00 p.m. – The business meeting begins
- At meeting’s end – Drawing for the \$300 and eight \$50 Grand Prizes

During the meeting, five directors will be elected. The following candidates are running unopposed.

- Zone 1 – City of Martin – Scott Larson, incumbent
- Zone 3 – West Bennett County – Troy Kuxhaus, incumbent
- Zone 4 – East Oglala Lakota County – Connie Whirlwind Horse, incumbent
- Zone 5 – Jackson County – Neal Livermont, incumbent
- Zone 8 – At Large – Wade Risse, incumbent

Capital credit checks were mailed April 4. They will not be given out at the meeting.

Respectively yours,
Brent Ireland, Secretary

74th Annual Meeting Program

- Registration Begins.....5:30 p.m.
- Drawing for Early Attendance Prize.....7 p.m.
- Call to Order.....President Clarence Allen
- Invocation.....Vice President Wade Risse
- Determination of Quorum.....President Clarence Allen
- Reports
 - Secretary.....Brent Ireland
 - Proof of Mailing of Notice of Meeting
 - Minutes of Previous Meeting
 - Treasurer’s Report.....Troy Kuxhaus
 - Manager’s Report.....Josh Fanning
 - Introduction of Guests
 - Past Directors Lost
 - Report of Election.....Robert Schaub, Attorney

- Scholarship Presentation
- Old Business
- New Business
- Adjournment

Drawing for Prizes and Grand Prizes
(All Prize Winners Must Be Present)

Lacreek Electric Association, Annual Report 2021

Budget-friendly efficiency upgrades

There are two ways to measure energy efficiency improvements.

There's the payback period - the amount of time it will take for the improvement to pay for itself. Then there's comfort.

Improvements can often increase the comfort level of a home - not easy to measure but one of the driving forces behind home weatherization efforts. There are several areas of the home that can be improved easily, without breaking your budget.

LIGHTING - There has been a steady decline in the price of LED bulbs for residential consumers. Nowadays, 60-watt-replacement LEDs can be purchased for \$5 or less. LEDs should save 60 percent or more on power costs compared to incandescent bulbs and last for many years. New LED fixtures are also an affordable option. They come with LED bulbs built in so you never need to change the bulbs.

HEATING AND AIR CONDITIONING - The Energy Information Administration estimates that heating, ventilating and air conditioning systems account for 22 percent of a typical home's annual electric bill. While newer systems can be 20-45 percent more efficient than older ones, the upfront cost is often a barrier to adoption.

But there are still ways to save. Simple solutions such as changing air filters at least every three months will increase airflow to rooms, increase the life of the HVAC unit's motor and improve air quality in the home. Sealing and insulating ductwork can be done in a weekend and results in energy savings of up to 20 percent.

To lessen the amount of work that heating and cooling systems need to do, it is important to find and seal air leaks. Look for leaks around exterior doors and windows, electric outlets, and entrance points for TV and phone cables. Also check dryer vents and any place with an opening in the wall. To seal leaks, apply caulk, spray foam or weather-stripping to these areas.

Simple acts such as cooking outdoors on a hot summer day or keeping curtains closed to keep out the summer sun will keep the interior of your home cooler and reduce the amount of time AC units need to operate.

EV REGISTRATIONS SEE SUBSTANTIAL INCREASE



According to the South Dakota Dept. of Revenue, the state experienced a boom in electric vehicle registrations in 2021.

At year-end, there were 1,313 electric vehicles registered in the state. That compares to just 242 from the year before. EV registrations saw a slight jump from 227 in 2015 to 236 in 2019.

Minnehaha County led the state with 406 registered EVs, followed by Pennington County with 228 and Lincoln with 151. Nine counties had no EVs registered.



Stay away from power lines

Naomi Goldade

Naomi Goldade likes to have outdoor fun in the spring and summer but reminds co-op members to stay away from power lines. Naomi is the daughter of Alex and Rachael Goldade of Timber Lake. They are members of Moreau-Grand Electric Cooperative.

Kids, send your drawing with an electrical safety tip to your local electric cooperative (address found on Page 3). If your poster is published, you'll receive a prize. All entries must include your name, age, mailing address and the names of your parents. Colored drawings are encouraged.

SUPER CASSEROLES

CHICKEN AND CHEESE CASSEROLE

Ingredients:
 2 cups uncooked elbow macaroni
 2 5-oz. cans of chicken chunks
 2 cups shredded cheddar cheese
 2 cups milk
 2 cans cream of chicken soup
 4 oz. sliced mushrooms
 1/4 cup chopped onion

METHOD

Preheat oven to 350 degrees. In a large bowl, mix all seven ingredients together. Pour into a 9x13 baking pan. Bake at 350 for 45 minutes or until bubbly and golden brown.

**Jeanette Kleinsasser,
Iroquois**

ONE DISH CHICKEN AND RICE

Ingredients:
 1/2 to 1 cup onion, chopped
 1/4 to 1/2 cup green and/or red bell pepper
 1 can cream of chicken soup (or cream soup of your choice)
 1/2 cup milk
 1/2 tsp. salt
 1/4 tsp. pepper
 1/3 cup mayonnaise
 2 cups chicken, cooked and chopped
 1 cup peas (frozen)
 2 cups cooked white rice
 1 cup shredded cheddar, divided

METHOD

Preheat oven to 350 degrees. Lightly grease a 9-inch x 13-inch baking dish and set aside. Sauté onion and bell pepper in olive oil or butter. Blend soup, milk, salt, pepper, and mayo in a bowl. Add chicken, peas, sauteed onions and peppers, and rice to the prepared baking dish. Mix gently. Pour soup over chicken mixture. Mix gently. Fold in half of the cheddar. Top with remaining cheese. Bake until top is golden brown, about 25 minutes.

Becky Walker, Sioux Falls

TUNA PASTA CASSEROLE

Ingredients:
 4 oz. dried whole-wheat rotini pasta (about 1-1/2 cups)
 Nonstick cooking spray
 16 oz. frozen mixed vegetables, thawed
 1 pouch (11 ounces) low-sodium chunk light tuna
 1 can (10-3/4 oz.) low-fat, low sodium condensed cream of chicken soup
 1/2 cup chopped roasted red bell peppers
 1/2 cup fat-free half-and-half
 1 tsp. all-purpose, salt-free seasoning blend
 3/4 cup crushed low-sodium, whole-grain crackers
 1/4 cup shredded or grated Parmesan cheese

METHOD

Prepare pasta according to package directions, omitting salt. Using colander, drain well. Transfer to large bowl. Preheat oven to 350 F. Lightly spray 2-quart glass baking dish with nonstick cooking spray. Stir mixed vegetables, tuna, soup, roasted peppers, half-and-half and seasoning blend into pasta until combined. Transfer to baking dish. Top with crackers and Parmesan cheese. Bake, uncovered, 25-30 minutes, or until casserole is warmed through and topping is golden brown.

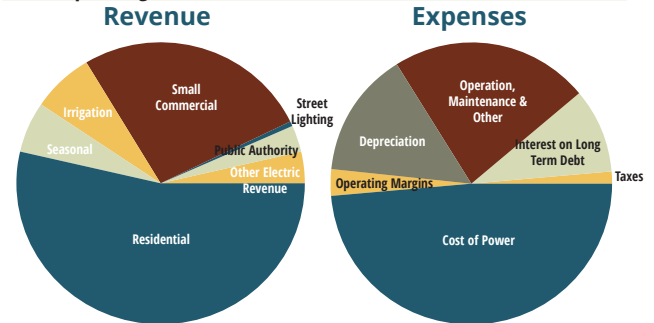
familyfeatures.com

Please send your favorite dairy recipes to your local electric cooperative (address found on Page 3). Each recipe printed will be entered into a drawing for a prize in December 2022. All entries must include your name, mailing address, phone number and cooperative name.

FINANCIAL STATEMENT

Balance Sheet (as of December 2021)		
ASSETS	2020	2021
ELECTRIC PLANT:		
In Service	\$70,522,953	\$72,761,295
Under Construction	\$1,000,493	\$1,072,412
Total Electric Plant	\$71,523,446	\$73,833,707
Less Accumulated Depreciation	\$(28,034,224)	\$(28,840,577)
Electric Plant – Net	\$43,489,222	\$44,993,130
OTHER PROPERTY AND INVESTMENTS:		
Investments in associated organizations	\$7,649,613	\$7,591,883
Other Investments	\$162,555	\$164,884
Special Funds	\$500,000	\$500,000
Total Other Property and Investments	\$8,312,168	\$8,256,767
CURRENT ASSETS:		
Cash and cash equivalents	\$1,017,169	\$367,200
Temporary cash investments	\$1,350,150	\$5,501,314
Investment in equity securities	\$2,502,690	-
Account receivable, less allowance for uncollectible accounts	\$869,954	\$1,135,819
Material and Supplies	\$1,529,566	\$966,587
Prepayments	\$147,876	\$568,512
Interest receivable	\$4,438	\$8,002
Total current assets	\$7,421,843	\$8,547,434
Deferred Debits	\$1,189,307	\$998,032
TOTAL ASSETS	\$60,412,540	\$62,795,363
EQUITIES & LIABILITIES:		
EQUITIES		
Patronage capital	\$18,912,268	\$18,626,862
Other Equities	\$4,507,806	\$5,066,907
Total Equities	\$23,420,074	\$23,693,769
LONG-TERM DEBT, Less CURRENT MATURITIES		
	\$32,171,932	\$34,348,295
CURRENT LIABILITIES:		
Current maturities long-term debt	\$1,483,200	\$2,158,000
Accounts payable	\$824,491	\$845,270
Customer deposits	\$491,610	\$470,935
Taxes accrued	\$189,739	\$196,233
Other current liabilities	\$273,057	\$294,760
Total Current Liabilities	\$3,262,097	\$3,965,198
DEFERRED CREDITS		
Members' energy payments	\$1,058,437	\$288,101
Electric revenue deferral	\$500,000	\$500,000
Total Deferred Credits	\$1,558,437	\$788,101
TOTAL EQUITIES & LIABILITIES	\$60,412,540	\$62,795,363

Statement of Operations (Year Ending December 2021)		
OPERATING REVENUES	2020	2021
Electric	\$14,197,245	\$14,087,040
Other	\$222,947	\$504,145
Total Operating Revenues	\$14,420,192	\$14,591,185



OPERATING EXPENSES	2020	2021
Cost of Power	\$7,292,502	\$7,271,617
Transmission	\$81,741	\$46,765
Distribution – Operations	\$326,715	\$542,655
Distribution – Maintenance	\$891,759	\$917,970
Member Accounts	\$529,330	\$543,357
Member Service & Information	\$115,153	\$61,800
Administrative & General	\$1,250,228	\$1,278,552
Depreciation	\$2,173,369	\$2,133,023
Taxes	\$190,431	\$196,458
Interest on Long-term Debt	\$1,185,714	\$1,428,954
Other Deductions	\$11,540	\$16,400
Total Operating Expenses	\$14,048,482	\$14,437,551
Operating Margin Before Capital Credits	\$371,710	\$153,634
Generation & Transmission Capital Credits	\$425,179	\$285,851
NET OPERATING MARGIN	\$796,889	\$439,485
NON-OPERATING MARGIN		
Merchandising, less costs & expenses	\$6,435	\$3,054
Gain on disposal of assets	\$40,735	\$18,838
PPP Loan Forgiveness	-	\$592,958
Other Cooperative Capital Credits	\$51,431	\$61,732
Interest Income	\$314,383	\$105,836
Total Non-Operating Margin	\$412,984	\$782,418
NET MARGIN	\$1,209,873	\$1,221,903

2021 Year End Statistics

Year Energized	1948	Number of Active Meters	6,812	Revenue per Kwh Residential	\$0.1072
Plant	\$73,833,708	Average Monthly usage, Residence	1,298	Winter Demand	29,777
Equity	37.73%	Number of Electric Heat Homes	831	Summer Demand	23,802
Service Area	5,174	Number of Irrigation Systems	128	Power Supplier:	
Total Miles of Line	3,177	Number Of Directors	13	Basin Electric	86.29%
Miles Transmission	204	Number of Members	4,280	WAPA	13.71%
Miles Distribution	2,657	Number of Employees	27	Counties Served: Bennett, Jackson, Oglala	
Miles Underground	317	Number of Security Lights	3,921	Lakota, Todd and Mellette in South Dakota	
Meters per Miles	2.14	Kwh Sales	130,167,394	and Cherry in Nebraska.	

SEVENTY-THIRD ANNUAL MEETING OF MEMBERS

April 22, 2021

The 73rd Annual Meeting of the Members of Lacreek Electric Association, Incorporated, was held at the Bennett County High School Auditorium, the afternoon of April 22, 2021, beginning at 1:00 P.M. Member Services/Administrative Assistant Stacey Robinson welcomed the members to the meeting and asked for everyone to rise for the National Anthem.

President Allen called the meeting to order and announced the Board of Director incumbent candidates running unopposed; Zone 2-East Bennett County, Brent Ireland, Zone 4-East Oglala Lakota County, Marion Schultz, Zone 7-Cherry County NE, Tom Schlack and Zone 9-West Oglala Lakota County, Donovan Young Man.

President Allen called upon Director Wade Risse who gave the invocation.

President Allen reported the determination of a quorum was met with 53-members registered.

President Allen called on Secretary Ireland who read the Proof of Mailing of Notice of the Annual Meeting.

Secretary Ireland asked if they could dispense with the reading of the minutes from the September 25th, 2020 Annual Meeting and referred to the minutes printed in the program. The members agreed, and upon motion duly made, seconded and carried, the 2020 minutes were approved.

Secretary Ireland called on Treasurer Kuxhaus for the treasurer's report.

Treasurer Kuxhaus gave an overview of the financial statement and advised the members that the actual full financial report is printed in the program. Treasurer Kuxhaus asked for a motion from the members to approve the treasurer's report. A motion was made, seconded and carried to approve the treasurer's report.

Lacreek's Attorney Robert Schaub with the Law Firm Sundall, Schaub and Fox, P.C. advised that all incumbent directors ran unopposed; Zone 2-East Bennett County, Brent Ireland, Zone 4-East Oglala Lakota County, Marion Schultz, Zone 7-Cherry County NE, Tom

Schlack and Zone 9-West Oglala Lakota County, Donovan Young Man. They will all serve a 3-year term.

President Allen asked for any old business. There was none.

President Allen again called upon Robert Schaub, Lacreek's Attorney who asked for a motion to approve the actions taken by the Board of Directors of the Association since the last Annual Meeting of the Members; with a motion made, seconded and carried to approve the Board's actions.

President Allen called for any new business. There was none.

President Allen thanked Todd Eliason with Rushmore Electric Power Cooperative for the PowerPoint presentation and Stuart Livermont for the sound system.

There being no further business to come before the meeting, upon motion duly made, seconded and carried, the meeting was adjourned.

Lacreek Electric Association, Annual Report 2021

Electric Cooperative Directors Elected by You to Serve You

Clarence Allen , President	Zone 1	2020-2023
Wade Risse, Vice President	Zone 8	2019-2022
Brent Ireland, Secretary	Zone 2	2021-2024
Troy Kuxhaus, Treasurer	Zone 3	2019-2022
Scott Larson	Zone 1	2019-2022
Marion Schultz	Zone 4	2021-2024
Connie Whirlwind Horse	Zone 4	2019-2022
Jerry Sharp	Zone 5	2020-2023
Neal Livermont	Zone 5	2019-2022
Clifford Lafferty	Zone 6	2020-2023
Tom Schlack	Zone 7	2021-2024
Cole Lange	Zone 9	2020-2023
Donovan Young Man	Zone 9	2021-2024

GOATS STEAL THE SPOTLIGHT



Anna Johnson and Jessemy Sharp groom at the 2021 Brown County Fair. *Photo by Donna Sharp*

Ag students show a fondness for working with goats at youth exhibitions and competitions

Billy Gibson

billy.gibson@sdrea.coop

Matea Gordon's goats always keep her guessing.

The 17-year-old is one of four Gordon siblings from Whitewood who have been highly active - and highly successful - on the 4-H and FFA competition scenes over the past decade.

She prefers to work with market goats because the animals force her to stay on her toes. She never knows what she's going to get.

"They tend to have big personalities. Sometimes they're shy and cute. Other times they can be pretty stubborn. You just never know," she said. "Plus, it's fun to see how much progress you can make with them throughout the year."

Her younger brother, Bennett, enjoys raising and feeding the goats daily.

"I've learned about genetics, animal health and feed nutrition. The goats kind of become your friend as you bring them up and take care of them."

The brother-sister duo are part of a

trend in ag exhibition circles that finds eager competitors opting to work with goats. Their mom, Kindra Gordon, said all four of her children have been fond of tending to goats.

She said the family started with two goats a decade ago, and their involvement grew from there. Today, they travel and compete at nearly a dozen shows throughout the year. Likewise, she has seen youth participation in goat exhibitions double over the past few years.

"When the kids joined 4-H, they wanted to do a project and the goats just seemed to fit our lifestyle," she said.

Regardless of what animals her children choose, she has found there's much to be gained in participating in the competitions and other opportunities that youth ag programs provide.

"The kids have learned about responsibility, life skills and the agriculture industry. They learn about sportsmanship and how to manage stress. We tell them to be happy for their friends when it's their time to win, and

they'll be happy for you when you win. We've met a lot of people and made a lot of friends along the way."

One of those friends is Tessa Erdmann, a freshman at SDSU from Groton who serves as president of the state FFA. She is long-time friends with Matea and her older sister, Danika, both of them winners of Butte Electric Cooperative's college scholarship program.

Tessa said her choice to work with goats mostly came down to a practical matter. She cites her smallish physical stature as one reason for channeling her focus on the species.

"I'm 5 feet tall and I came to the conclusion that I didn't want to hold on to something way bigger than me," she said.

At age 12, Tessa went with her father, Darrin, to an auction and brought home her first three animals: Buttercup, Sassy and Thunderbolt. She describes the event as "love at first sight." In her first year to show at the Brown County Fair, Tessa won ribbons in the breeding and showmanship divisions and has placed many times since then.

A former gymnast and a member of Northern Electric based in Aberdeen,

Moose sees goat-breeding as a gift



Garret Moose isn't sure if he chose goats or goats chose him. In 2004, Moose received twin Nubian kids – a buck and a doe – as a birthday gift. That gift sparked an interest in goats that has led him to building a top breeding operation in southwest Minnesota.

By 2011, Moose was ready to hit the show circuit with only marginal success in the early stages. It would take a couple of years to make it to the American Dairy Goat Association National Show in St. Paul where Moose-G Foxy was named Reserve Junior National Champion Recorded Grade. He saw it all as a learning process.

“When I started out I didn't win anything but I learned a lot, and not to mention I met so many great people that I now call close friends,” he said. “When Foxy won, that's what really got us excited and dedicated to continue on this path with dairy goats.”

Moose raises and markets Alpines, Lamanchas, Saanens, Toggenburgs and Recorded Grade Seniors and Juniors.

He said he enjoys working with the animals and is especially appreciative of his “goat family.”

“It's a tight community and we're always seeing each other at shows, exchanging information and sharing ideas,” he said. “I couldn't do what I do without my family and friends.”

For more information, Moose can be contacted at 507.530.3175.



Clockwise from top/left: FFA President Tessa Erdmann; Kylee Ellerton of Custer; Taylor, Tate and Tye McGraw of Raymond.



Tessa said she has also experienced a large measure of mutual support within the animal exhibition community.

“Everybody is always so nice and you can count on everyone to help one another,” she said. “We're competitive inside the ring, but outside we're family and we don't hate each other. One year, someone's father was hurt and couldn't make it to the competition. Everyone chipped in to help the family out.”

Becca Tullar is a 4-H advisor in Brown County. She explained what she believes is the reason for the rising interest in goats.

“They're a good starter animal and youngsters get used to them and many of the students stick with them. They kind of grow up together,” she said.

“They're easy to handle. Once you get them halter-broke they'll go wherever you want. They're fun animals to show.

They're almost like pets and they build easy bonds.”

One competitor who has a way with his goats is Tate McGraw, a 17-year-old from Raymond who has Down syndrome. His father, Wade, said Tate has been showing since he was 8.

“It's been a real blessing. He's easy-going and just has a way with the animals. He can get them to do things that other handlers can't,” he said.

His other son Tye, 14, and daughter Taylor, 13, also show goats and other animals and McGraw said they each have their individual strengths.

“The best thing as a father is to see the network of friends they've developed across the state. They all support each other and they've learned to respect one another because they know one day they could be on top and the next day they could be on the bottom.”

FIVE MEMBERS SEEK LACREEK DIRECTOR SEATS

Members attending the 2022 Lacreek Electric Association annual meeting will elect directors to represent Zones 1, 3, 4, 5 and 8 for three-year terms. The following individuals have filed petitions to run for these positions. The following is a piece of brief biographical information on each of the candidates.

Zone 1 - City of Martin

Scott Larson - Scott was born in Pierre, S.D., and raised in Martin, S.D. He graduated from Bennett County High School in 1987, attended Mitchell Vo-Tech, and in 1989, joined the United States Army. That same year, he married Carrie, also a Martin local, and they now have two grown sons. After serving in the Gulf War, Scott focused his profession in the building trades and has owned his own residential construction company since 1995. Scott also continued his education at the University of South Dakota. He has served as Martin City Foreman, Martin Code Enforcement Officer, and spent five years as a city councilman. He also served as American Legion Post 240 Commander for four years. Over the years, Scott has coached American Legion Baseball, flag football, AAU wrestling and was an assistant coach for high



Scott Larson

school wrestling. He enjoys his job, hunting and fishing, friends and family and loves life enough to smile infectiously. Scott has served on Lacreek's board since 2019.

Zone 3 - West Bennett County

Troy Kuxhaus - Troy has been a lifelong resident of Bennett County. He was born in 1969, graduated high school at Bennett County in 1987, graduated from Western Dakota Tech in 1989 as a Certified Welder. In 1990, he married Amie also a local resident and they have two children, (Keven and Colin). They reside on the family farm west of Martin that he owns and operates. He is the third generation Kuxhaus to run the family farm. He served on the FSA board for nine years. He is a member of the Batesland Volunteer Fire Department. Hobbies include friends, and family ventures of hunting, fishing and vacations. Troy has served on Lacreek's board since 2013.



Troy Kuxhaus

Zone 4 - East Oglala Lakota Co.

Connie Whirlwind Horse - Connie attended school at Holy Rosary Mission (now Red Cloud) and then attended one year of college at Black Hills State. She and her late



Connie Whirlwind Horse

husband, Louis, ranched near Kyle for many years. She is the mother of nine children and continues to run the ranch. She has served on the Oglala Lakota County Commission and is the treasurer for the Kyle Elderly Meals Program. Connie has served on Lacreek's board since 1994.

Zone 5 - Jackson County

Neal Livermont - Neal is the son of Butch and Judy Livermont. He grew up on, and continues to operate, the Livermont Ranch southeast of Interior. Neal is married to Dana and together they share four daughters. Neal was a member of the band, Country Rush, for 20 years before retiring in 2014. He currently serves on the board of the Jackson County FSA, and the Oglala Lakota Livestock and Land Owner Association and the Interior Roping Club. Neal has served on Lacreek's board since 2016.



Neal Livermont

Zone 8 - At Large

Wade Risse - Wade graduated from Bennett County High School in 1986. In 1994, he married his wife Bonnie, and they have four children. He ranches and raises Angus cattle in the Risse Half Box V Family Ranch operation. He has served on the Bennett County Fair Board and St. Martin's Knights of Columbus Council for a number of years. Wade has served on Lacreek's board since 2013.



Wade Risse

MEET YOUR LACREEK ELECTRIC COOPERATIVE DIRECTORS



Clarence Allen

**Board President
Clarence Allen
Zone 1 - City of
Martin**

Clarence was raised northeast of Long Valley, S.D. He came to Bennett County in 1972 and began farming and ranching. Clarence worked for Mueller Feeds and Pride Grain for 23 years while still farming and ranching. He retired from Pride Grain in June of 2012. Clarence still runs cattle and helps others in the area. Clarence and his late wife Nancy, have four grown children. Clarence has served on Lacreek's board since 2014.



Brent Ireland

**Board Secretary
Brent Ireland
(Tauna)
Zone 2 - East
Bennett County**

Brent was raised in Martin and is a graduate of Bennett County High School. He earned a Mechanical Engineering degree from Brigham Young University. He spent nine years in the oil, gas and petrochemical industries (mostly in Texas) before returning to Martin to the farm/ranch he grew up on. He has served on the Board of Directors of the Dakota Lakes Research Farm in Pierre since 2006. He and his wife, Tauna, have four children. Since returning to Martin he has been involved with area youth athletics (flag football, baseball, wrestling). He also coached wrestling at Bennett County High School for 14-years. Brent has served on Lacreek's board since 2015.



Marion Schultz

**Marion Schultz
(Dawn)
Zone 4 - East Oglala
Lakota Co.**

Marion graduated from Gordon High School and received a degree in Economics and Political Science at South Dakota State University. He has ranched in the Batesland area all of his life. Marion has been on the Batesland Fire Department for more than 50 years. He has served on the County Committee for USDA since 2006 and has also served on the Bennett County Co-op board. Marion has served on Lacreek's board since 2000.



Donovan Young Man

**Donovan Young
Man (Dale)
Zone 9 - West
Oglala Lakota Co.**

Donovan graduated from Pine Ridge High School. He also served on the Oglala Sioux Tribal Council from 1992-1996. Donovan has worked for the Oglala Lakota County School District since 1981 and also raises cattle on his ranch east of Oglala. Donovan has served on Lacreek's board since 1994.



Clifford Lafferty

**Clifford Lafferty
(Sherry)
Zone 6 - Todd and
Mellette Co.**

Clifford has been a lifelong resident of Todd County. He has been a rancher for the majority of his life. He and his wife Sherry have been married for over 40-years and have two grown

children. Clifford currently serves on the Rosebud Sioux Tribal Council. Clifford has served on Lacreek's board since November 2019.



Cole Lange

**Cole Lange (Joy)
Zone 9 - West
Oglala Lakota Co.**

Cole has lived on his ranch in Oglala his whole life, which he has been running since the age of 18.

He is also a member of the Oglala Sioux Tribe. He has served on the FSA Board in Martin and been a Shannon County Representative on the Stock Growers Board. Cole has served on Lacreek's board since June of 2020. 1161406003



Jerry Sharp

**Jerry Sharp
(Stephanie)
Zone 5 - Jackson Co.**

Jerry graduated from Kadoka High School and continued his education at Black Hills State University

in Spearfish. He taught school for three years and then returned to ranch near Long Valley, S.D. Jerry is active in the South Dakota Rodeo Association, a member of R-Calf, a member of SD Stock Growers and a Director for the Western Jr. Livestock Show. Jerry has served on Lacreek's board since 1994.



Tom Schlack

**Tom Schlack
(Karen)
Zone 7 -
Cherry Co., Neb.**

Tom is a graduate of Bennett County High School and the University of

South Dakota. Tom also worked for Lacreek Electric as a journey lineman for seven years. He has ranched in the Eli area since 1981. Tom has served on Lacreek's board since 1988.

THE POWER OF LOAD MANAGEMENT

Chris Danielski monitors an irrigation pivot control panel from his phone app. Photos by Billy Gibson

Load control program reaps big rewards for both residents and large energy users

Billy Gibson

billy.gibson@sdrea.coop

Danielski Farms didn't become a blue chip producer over the past four decades by making boneheaded business decisions.

In 2013, the company was invited by Cherry-Todd Electric to participate in the cooperative's irrigation load management program. Load management is a term used to describe a co-op's ability to balance the system's electrical load by adjusting or controlling network demand.

Better balance brings greater efficiency and lower costs for all consumers on the system.

Len Danielski recalls pulling the leadership team together and weighing the pros and cons. The proposal included installing specialized equipment that would allow Cherry-Todd to temporarily interrupt power - when warranted - to any of roughly 200 irrigation pivots across 18,000 acres.

While different electric co-ops have their own load management policies, Cherry-Todd's guidelines call for a lower irrigation rate for participants and the right of the consumer to withdraw and return to the regular rate at any time.

The deliberation process was helped along by the fact that Danielski's General Manager Gary Garvin previously served as a board member at Cherry-Todd. He was aware the cooperative business model was designed and intended to produce "win-win" situations for both the co-op and its owner-members.

Danielski Farms ultimately decided to place all of its irrigation system under load management and Len Danielski reports the results have exceeded expectations.

"We found it was a winner all the way around. We have the choice to place one pivot, two pivots, or all pivots on the load control program, or none," he said. "We've analyzed the benefits over time and found that the company wins,

the cooperative wins and the co-op members win. It's a great partnership."

Chris Rahn, Cherry-Todd's primary key account contact, said load management is a tremendous benefit for members because it allows the cooperative - working in concert with both the member and the co-op's wholesale supplier Rushmore Electric - to distribute power more efficiently.

Rahn explained that one of the best ways to deliver power at the lowest possible cost is to "shave the peak" or to make sure supply and demand stay in a constant state of equilibrium as conditions such as weather, member consumption and market forces change constantly. Utilities are able to control supply but can find it challenging to project what consumer demand will be at any point in time.

Educated projections are important, but there are occasions when it helps for the co-op to have some control over demand. In the end, everyone benefits.

"We've had a residential water heater load control program for quite a while and it's been well-received by our

members,” Rahn said. “It enables us to get a better handle on the demand side and that’s a benefit for all the members on our lines.”

Garvin said another mitigating consideration for Danielski Farms is the fact that Cherry-Todd has done its part by making significant improvements to its infrastructure over time.

“We used to joke that we were always under load management because the power would go out a lot, but things have changed dramatically for the better and we hardly ever get bumped these days,” Garvin said. “I’ve also got load management on my water heater at home and it works for us.”

Len Danielski said that under the load control program power to his pivots rarely gets disrupted and typically only for a few hours when it does. He said the company is pleased to participate in a program that will ultimately benefit all co-op members across the system.



From left, Gary Garvin, Len Danielski, Chris Danielski and Chris Rahn discuss Cherry-Todd Electric’s load management program.

“We’ve found interruptions are usually during times when we don’t need to be irrigating anyway, like in the heat of the day when a lot of the water will only get evaporated,” he said. “And if it helps the cooperative and saves every member on the system some money, that’s great.”

Another element that makes the program work for Danielski Farms is the installation of a remote irrigation control system. All of Danielski’s pivots



All of the roughly 200 irrigation pivots at Danielski Farms are under Cherry-Todd Electric’s load management program.

are connected to the Ag Sense phone app that enables a user to turn the pivots on or off individually or in groups, and receive an abundance of electronic data.

Chris Danielski manages the app and said the telemetry allows him to track exactly when load control is being implemented, though he usually receives information from the co-op as well. He said efficiencies gained through both programs have resulted in net savings.

“If we have an hour or two of load management, once we get the notice that we’re back on I can restart the pivot from inside the office,” he said. “It used to take several hours to get someone to go out and restart the system.”

East River Electric, based in Madison, is a power supply cooperative that delivers wholesale electricity to 24 distribution co-ops in eastern South Dakota and western Minnesota. East River has offered its co-ops a load management option since 1985 and has saved members roughly \$260 million in avoided wholesale power costs.

More than 75,000 different electric loads in homes, farms and businesses are connected to the system, including water heaters, air conditioners, irrigation systems and other big energy users.

Chris Larson, general manager of Clay-Union Electric, said the co-op based in Vermillion offers end-use consumers a load control program for

water heaters, irrigation systems, grain bins and other commercial processing equipment.

The cooperative has 320 irrigation systems under load management with requests for 10 more in the near future as drought conditions show no signs of abating.

Larson emphasized that every cooperative has its own unique rate structure and load management policies when it comes to discounts, demand charges, time-of-use, system peaks and other variables. He said it’s important for consumers to contact their local co-op for details and to work closely with staff to find the best solutions for the member.

He said co-ops are obligated to capture their costs of providing power but are also responsible for finding ways to accommodate their member-owners and helping them achieve their individual goals.

“Load management really is essential to maximizing system efficiency,” Larson said. “It’s a sophisticated process that ultimately leaves the member with plenty of choices. If we’re controlling irrigation or commercial operations at a time that’s not good for them or complicates their workflow, they need the ability to override the control system so they can make a good business decision that’s best for them.”

Top Row (left to right): Aaron Risse, Dane Claussen, Cody Larson, Trace Scott, Jesse Byerley
Fourth Row: Garrett Metzinger, Brad Hahn, Justin Smokov, Lonny Lesmeister, Tee Allen
Third Row: Mike Pisha, Ryan Pettit, Tyler Brown, Jordon Bakley, Kody Hagen, Roy Guptill
Second Row: Lisa Jensen, Tracie Hahn, Terri Gregg, Amy Pisha, Anna Haynes
Front Row: Josh Fanning, Stacey Robinson, Ashley Turgeon, Sherry Bakley, Jessica Cook, Kasi Harris



Meet your Lacreek Electric Staff

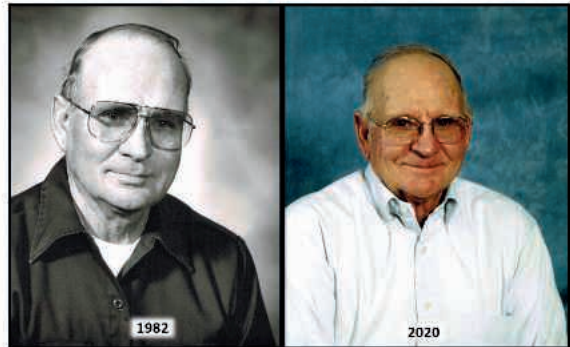
IN MEMORY OF:



Dean O'Neill 1937 – 2019

Served on the Lacreek Electric Board of Directors - 32 years

Secretary 1992-1995
 Treasurer 1998-2001
 Treasurer 2013-2016



Melvin Cummings 1936 – 2020

Served on the Lacreek Electric Board of Directors - 38 years

Treasurer 1990-1993
 Vice-President 1995-1997, 2010-2013
 President 1998-2001

LACREEK AWARDS SCHOLARSHIPS

Annually, Lacreek Electric awards scholarships to four first-year college or technical school students and one second-year college or technical school student. Applicants must be members or dependents of members of LEA and citizens of the United States. In addition, the applicants must carry a cumulative high school grade point average of 2.5 or higher and demonstrate scholastic achievement and community involvement.

The Lacreek Electric/Basin Electric Power Cooperative Scholarship in the amount of **\$2,500** was chosen by Basin Electric. This scholarship is awarded to one recipient who is entering their first year of continuing education. This year, the scholarship was awarded to **Grace Jager**.



Grace Jager

The Lacreek Electric Board of Directors Scholarship in the amount of **\$2,000** was chosen by Basin Electric. This



Baily May



Jade Byrne



Maxwell Zickrick

scholarship is awarded to one recipient who is entering their first year of continuing education. This year, the scholarship was awarded to **Baily May**.

Two Lacreek Electric Association scholarships in the amount of **\$1,500** were drawn from the remaining applicant pool by the LEA board of directors. These scholarships are awarded to two recipients who are entering their first year of continuing education. These scholarships were awarded to **Jade Byrne** and **Maxwell Zickrick**.

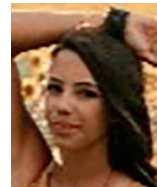
In 2021 the employees of Lacreek Electric got together and decided to have an Employee



Eden Fanning

Scholarship as well. This scholarship fund is contributed to by the employees and is a **\$1,000** scholarship. The recipient of the scholarship must be a high school senior and a child of an employee. This year's scholarship was awarded to **Eden Fanning**.

One additional Lacreek Electric Association scholarship in the amount of **\$1,500** was drawn from the applicant pool from the previous year of non-scholarship recipients. This scholarship was awarded to **CJ Livermont**.



CJ Livermont

On behalf of the Lacreek Electric Board of Directors, General Manager, Staff and Employees, we want to congratulate the recipients of these awards.

2022 YOUTH EXCURSION

Calling all high school students! Is your parent or guardian an active member-owner of Lacreek Electric? If so, you're eligible to apply for an unforgettable summer experience: Youth Excursion 2022!

If chosen, you will receive an all-expenses-paid trip to Bismarck, N.D., for a youth event unlike any other. From **July 25-28**, participants will stay on-campus at Bismarck State College. During this time, they will have the opportunity to sightsee, make friends from all across the state and gain a new understanding of where their electrical power comes from.

Once participants arrive on the campus, they can look forward to two whole days of building friendships, taking in the sights of North Dakota's capitol and learning "The Story Behind the Switch." During their stay, students will get to hear from power industry experts and participate in hands-on activities. Students will be given the opportunity to tour the Great Plains Synfuel Plant, Freedom Coal Mine and Antelope Valley Station Power Plant to see where South Dakota's power is generated.

There will also be plenty of time built in for

recreation and socializing – students will play games, go on a scenic cruise in the Lewis and Clark Riverboat and much more. Participants can look forward to connecting with students from all across South Dakota, building strong friendships and learning from their peers.

To be eligible for Youth Excursion, students must be in high school, and their parent or guardian must be an active member-owner of Lacreek Electric.

Please contact Lacreek Electric at 605-685-6581 for more information.

To apply, please fill out the application below and mail it to Lacreek Electric – P.O. Box 220; Martin, SD, 57551. Application deadline is June 1, 2022.

2022 Youth Excursion Application

Name: _____
 Address: _____
 City: _____ State: _____ Zip: _____
 Phone Number: _____
 Email: _____
 Parent/Guardian's Names: _____
 School: _____ Year in School in 2022-2023 School Year: _____
 Gender: _____ T-shirt Size: _____

Return this information by June 1, 2022, to: Jessica Cook at Lacreek Electric.



To have your event listed on this page, send complete information, including date, event, place and contact to your local electric cooperative. Include your name, address and daytime telephone number. Information must be submitted at least eight weeks prior to your event. Please call ahead to confirm date, time and location of event.

To view the publication's master event calendar, scan the QR code below:



Or visit <https://sdrea.coop/cooperative-connections-event-calendar> to view more upcoming events.

APRIL 27-30
45th Annual Kingswood Rummage Sales
 Southwest Sioux Falls, SD,
kingswoodrummage.com

APRIL 28
MercyMe: The Inhale (Exhale) Tour
 Denny Sanford Premier Center,
 Sioux Falls, SD, 605-367-7288

APRIL 28-30
26th Annual Black Hills Dance Festival
 The Monument, Rapid City, SD,
blackhillsdancefestival.com

APRIL 29-MAY 1
State USBC Women's Bowling Tournament
 Village Bowl, Mitchell, SD,
 605-336-5583

APRIL 29-MAY 1, 5-7
Ordinary Days
 Grand Opera House, Pierre,
 SD, pierreplayers.com

APRIL 30
SDSO Centennial Finale
 Washington Pavilion, Sioux
 Falls, SD, sdsymphony.org

MAY 3-8
Come From Away
 Washington Pavilion, Sioux
 Falls, SD, www.washingtonpavilion.org/event/come-away

MAY 7
Cinco de Mayo Fiesta
 131 E Falls Park Drive, Sioux
 Falls, SD, 605-274-3735

MAY 8
Mother's Day Tours
 Historic Adams House and
 Days of '76 Museum,
 Deadwood, SD, 605-578-3724

MAY 14-15
AMA Coins and Sports Cards Show
 Denny Sanford Premier
 Center, Sioux Falls, SD,
 605-321-9195

MAY 14-15
Ellsworth Air and Space Show
 1940 EP Howe Drive, Ellsworth
 AFB, SD, ellsworthairshow.com

MAY 15
PAW Patrol Live!
 Swiftel Center, Brookings, SD,
www.swiftelcenter.com

MAY 17
Norwegian Independence Day
 Main Street, Vivian, SD,
 605-222-3296

MAY 20-22
Annual Sound of Silence Tesla Rally
 615 Washington Street, Custer,
 SD, 605-673-2244

MAY 20-22
Open House and Free Fishing Weekend
 Statewide, SD, 605-223-7660

MAY 21
Booth Day
 D.C. Booth Fish Hatchery,
 Spearfish, SD, dcboothfishhatchery.org

MAY 21
Frühlingsfest & Spring Market
 Main Street, Rapid City, SD,
 605-716-7979

MAY 28
Deadwood Live: Hank Williams Jr.
 Outlaw Square, Deadwood, SD,
www.deadwoodlive.com

MAY 28
Memorial Weekend in Mitchell
 Main Street, Mitchell, SD,
 605-292-4444

MAY 28-29
Black Hills Renaissance Faire
 Manuel Brothers Park, Lead,
 SD, www.blackhillsrenfest.com

MAY 29-30
Back When They Bucked Rodeo
 Days of '76 Arena, Deadwood,
 SD, 605-718-0810

MAY 30
Prairie Points Quilt Guild Show
 Harding County Memorial Rec
 Center, Buffalo, SD,
 605-641-5591

JUNE 2-5
Wheel Jam
 South Dakota State
 Fairgrounds, Huron, SD,
www.wheeljam.com

JUNE 3-5
Lake Andes Fish Days
 Citywide, Lake Andes, SD,
 605-487-7694

Note: Please make sure to call ahead to verify the event is still being held.